



**ZZ Exploration Pty Ltd**

**EL 30/2002**

**ANNUAL REPORT  
JANUARY 2005 - JUNE 2006**

July 2006

Project No. 1416.003

**ZZ EXPLORATION**



**SCIENTISTS  
ENGINEERS  
MANAGERS &  
FACILITATORS**

## PREFACE

### LIMITATIONS STATEMENT

This document has been prepared in accordance with the scope of services agreed upon between SEMF Pty Ltd (SEMF) and ZZ Exploration Pty Ltd (the Client). To the best of SEMF's knowledge, the report presented herein represents the Client's intentions at the time of printing of the report. However, the passage of time, manifestation of latent conditions or impacts of future events may result in the actual project and its impact differing from that described in this report.

In preparing this document, SEMF has relied upon data, surveys, analysis, designs, plans and other information provided by the client, and other individuals and organisations referenced herein. Except as otherwise stated in this report, SEMF has not verified the accuracy or completeness of such data, surveys, analysis, designs, plans and other information.

No responsibility is accepted for use of any part of this report in any other context or for any other purpose by third parties.

This report does not purport to provide legal advice. Readers should engage professional legal advisers for this purpose.

### DOCUMENT CONTROL

Project Name:	EL 30/2002 – Annual Report January 2005 – June 2006		
Project No.	1416.003		
Prepared For:	ZZ Exploration Pty Ltd		
Prepared & Published By:	SEMF Pty Ltd		
Contact:	John McCambridge		
Phone No:	(03) 6231 1211		
Facsimile:	(03) 6234 8709		
Email:	semf@semf.com.au		
Authors:	AF, JMC		
Reviewed/Approved By:	JMC	Review Date: 04/07/06	
Draft Rev 0	Draft Rev 1	Draft Rev 2	Final for Public Comment
			Final

---

## FOREWORD

---

### **Function of the Annual Report**

This Annual Report has been prepared as a public document for submission to Mineral Resources Tasmania (MRT). The report provides a summary of the exploration activities undertaken by ZZ Exploration Pty Ltd (ZZ Exploration) over the Exploration Licence EL 30/2002 (EL 30/2002) during January 2005 - December 2005, with current exploration results up to June 2006 also provided.

### **Role in the Regulation Process**

This document fulfils the role of an Annual Report for EL 30/2002 during January 2005 – December 2005, as required under Section 28 of the *Mineral Resources Development Act 1995*, and as requested of ZZ Exploration by Mineral Resources Tasmania (MRT) on the 2<sup>nd</sup> May, 2006.

---

## EXECUTIVE SUMMARY

---

ZZ Exploration Pty Ltd (ZZ Exploration) currently hold Exploration Licence EL 30/2002 (EL 30/2002), which contains a number of known mineral deposits and the potential for new economic mineral deposits to be discovered. This document fulfils the role of an Annual Report for the period January 2005 – December 2005, with current exploration results up to June 2006 also provided.

### *Regional Exploration*

- Gravity Survey – approximately 18 km of on ground gravity surveying, at 25m spacing has been undertaken by Solo Geophysics Pty Ltd under the supervision of David Leaman; and
- Initiation of a study into the possibility of other outcrops (e.g. Gordon Limestone, Oonah Formation, Bell Shale) hosting small scale lead-zinc deposits, nickel mineralization (e.g. Avebury or Melba Flats style deposits), and the potential for iron-magnetite resources proximal to the Heemskirk Granite.

### *Balstrup Fault Prospect*

- Collection of 7 samples for nickel analysis;
- Completion of a JORC compliant resource estimation and classification for the Balstrup Fault and its extension into EL 30/2002;
- Application for a mining lease (5M/2005) over the extension of the Balstrup Fault;
- Completion of a valuation of the mineral and production assets of Zeehan Zinc, which includes the Balstrup Fault; and
- Revision of the Zeehan Zinc Business Plan to reflect current changes to metals prices and exchange rates.



## TABLE OF CONTENTS

PREFACE .....	i
FOREWORD .....	i
EXECUTIVE SUMMARY .....	ii
TABLE OF CONTENTS .....	iii
1 INTRODUCTION .....	1
1.1 Purpose of this Document .....	1
1.2 The Proponent .....	1
1.3 Exploration Licence Schedule .....	1
1.4 Exploration Licence Location and Operations .....	1
1.4.1 Site Location and Mineral Exploration Area .....	1
1.4.2 Exploration Lease Tenure .....	2
1.5 Structure of this Document .....	3
2 SUMMARY OF PREVIOUS WORK .....	5
2.1 Previous Mining and Exploration within EL 30/2002 .....	5
2.1.1 Regional Exploration Activities .....	5
2.1.2 Previous Exploration over the Balstrup Fault Prospect .....	5
3 REGIONAL EXPLORATION UNDERTAKEN DURING 2005-2006 .....	6
4 EXPLORATION AT THE BALSTRUP FAULT, 2005-2006 .....	8
4.1 Geology .....	8
4.1.1 Deposit Type .....	8
4.1.2 Nickel Deposits .....	8
4.2 Mineral Resource .....	9
4.2.1 Resource Estimation .....	9
4.2.2 Resource Valuation .....	9
4.2.3 Mining Lease Application .....	9
4.2.4 Business Plan .....	10
5 EXPLORATION EXPENDITURE .....	11
5.1 Expenditure during this Reporting Period .....	11
5.2 Expenditure Commitments .....	11
6 PROPOSED WORK PROGRAM .....	13
7 SUMMARY OF EXPLORATION ACTIVITIES WITHIN EL 30/2002 .....	14
8 REFERENCES .....	15
9 APPENDICES .....	16

## FIGURES

Figure 1: Location of EL 30/2002 relative to Zeehan .....	2
Figure 2: Land tenure for EL 30/2002 .....	3
Figure 3: EL 30/2002 (West Comstock) gravity survey results (at 2.67 gms/cc) (Solo Geophysics 2006) .....	6

Figure 4: Exploration activity map for EL 30/2002 during 2005.....	14
--	----

## TABLES

Table 1: Brief description of the report structure.....	4
Table 2: Summary of nickel assay results for samples collected from within EL 30/2002 (ZZ Exploration 2006).....	8
Table 3: JORC resource classification for the Balstrup Fault prospect (Cotlco 2005b). ....	9
Table 4: Estimated resource valuations of the mineral assets of Zeehan Zinc Ltd (Anderson and Schwab 2006). ....	9
Table 5: Summary of expenditure over EL 30/2002 during 2005 - 2006.....	11
Table 6: Expenditure commitments by ZZ Exploration over EL 30/2002. ....	11
Table 7: Expenditure over EL 30/2002 by ZZ Exploration during 2003 - 2006.....	12

## PLATES

Plate 1: Gravity Surveying within EL 30/2002 .....	6
Plate 2: Gravity Surveying within EL 30/2002 .....	6

## APPENDICES

Appendix A: <i>Schedule from Exploration Licence EL 30/2002</i>
Appendix B: <i>Location of Mineral Deposits within EL 30/2002</i>
MIRLOCH Mineral Locations
Appendix C: <i>Gravity Surveys for the Zeehan Area, Tasmania</i>
Solo Geophysics & Co, 2006
Appendix D: <i>Proposed Geological Investigations over EL 30/2002</i>
Hellman & Schofield Pty Ltd, 2006
Appendix E: <i>Resources Estimation and Classification Update</i>
Cotlco Pty Ltd, 2005
Appendix F: <i>Results of Nickel Assays from within EL 30/2002</i>
ZZ Exploration Pty Ltd, 2006
Appendix G: <i>Valuation of the Mineral Assets of Zeehan Zinc Limited</i>
Anderson & Schwab Australia Ltd, 2006
Appendix H: <i>Application for a Mining Lease over the Balstrup Fault</i>
ZZ Exploration Pty Ltd, 2005
Appendix I: <i>Business Plan – Update of Financial Aspects, October 2005</i>
BDR Consulting Pty Ltd, 2005
Appendix J: <i>Business Plan – Update of Financial Aspects, January 2006</i>
BDR Consulting Pty Ltd, 2006

**ABBREVIATIONS**

Ag	silver
Allegiance Mining	Allegiance Mining No Liabilities
Anderson and Schwab	Anderson and Schwab Australia Ltd
Coffey Geosciences	Coffey Geosciences Pty Ltd
DIER	Department of Infrastructure, Energy, and Resources
DRP	Decommissioning and Rehabilitation Plan
DTAE	Department of Tourism, Arts, and the Environment
GPS	Global Positioning System
ha	hectares
JORC	Joint Ore Resource Committee
MRT	Mineral Resources Tasmania
Ni	nickel
NPV	Net Present Value
Pb	lead
RGC	Renison Goldfields Consolidated Ltd
SEMF	SEMF Pty Ltd
SMG Consultants	SMG Consultants Pty Ltd
Western Metals	Western Metal Resources Ltd
Zeehan Zinc	Zeehan Zinc Ltd
ZZ Exploration	ZZ Exploration Pty Ltd
Zn	zinc

## 1 INTRODUCTION

---

### 1.1 PURPOSE OF THIS DOCUMENT

ZZ Exploration Pty Ltd (ZZ Exploration) currently hold Exploration Licence EL 30/2002 (EL 30/2002), which is located near the Comstock mine.

This document fulfils the role of an Annual Report for EL 30/2002 during January 2005 – December 2005, as required under Section 28 of the *Mineral Resources Development Act 1995*, and as requested of ZZ Exploration by Mineral Resources Tasmania (MRT) on the 2<sup>nd</sup> May, 2006. Current exploration results up to June 2006 are also provided.

### 1.2 THE PROPONENT

ZZ Exploration is a wholly owned subsidiary of Zeehan Zinc Ltd (Zeehan Zinc). ZZ Exploration currently holds Exploration Licence EL 30/2002. ZZ Exploration's long term objective is to be one of the leading mineral exploration companies for Category 1 mineral deposits within the Zeehan area.

ZZ Exploration has applied for mining lease 5M/2005 over the Balstrup Fault, located within EL 30/2002, covering approximately 47ha.

Through the continued exploration for mineral deposits, ZZ Exploration aim to provide Zeehan Zinc's gravity separation plant at the Comstock mine with mineral resources for further processing over the medium to long-term period.

### 1.3 EXPLORATION LICENCE SCHEDULE

Details of EL 30/2002, including grid coordinates, are provided in Appendix A.

The location of known mineral deposits within EL 30/2002 is provided in Appendix B.

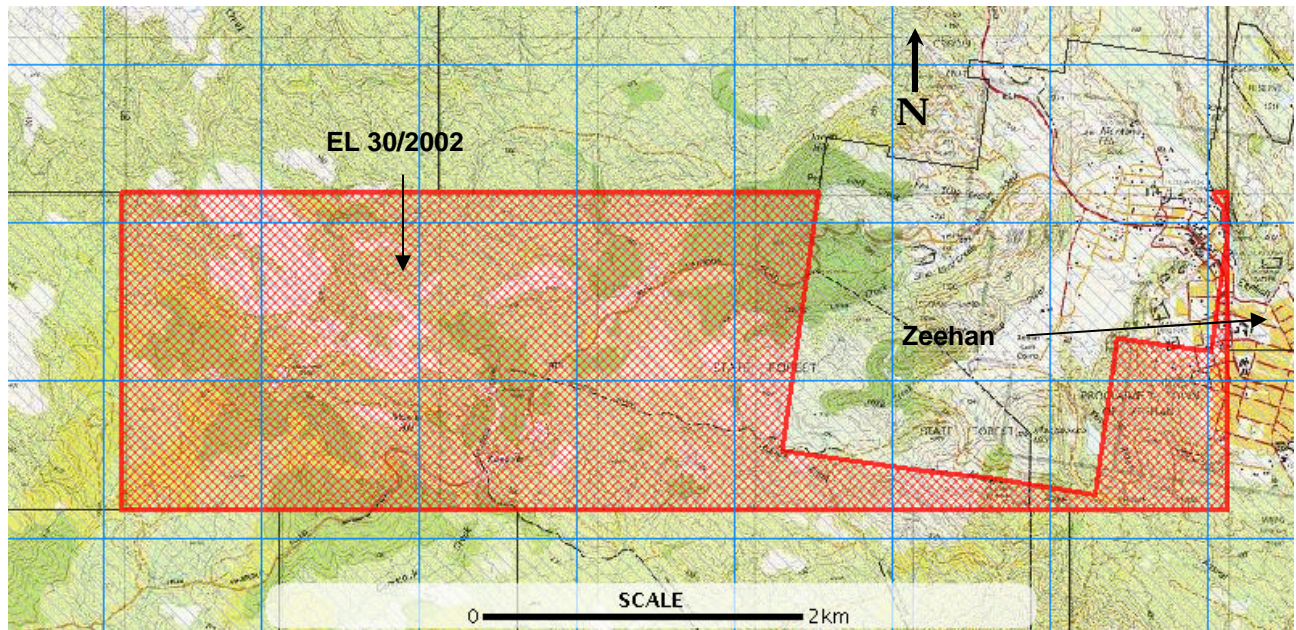
### 1.4 EXPLORATION LICENCE LOCATION AND OPERATIONS

#### 1.4.1 Site Location and Mineral Exploration Area

Exploration Licence 30/2002 (EL30/2002) covers 8 square kilometres and is located directly west of Zeehan, western Tasmania (Figure 1).

The main access to EL30/2002 is via Trial Harbour Road and a 4WD is required to negotiate the numerous partially overgrown former tramways that cross the area. EL30/2002 is dominated by flat open button grass plains, rolling hills, swamps, tea-tree scrubland and dense eucalypt regrowth. The latter is particularly dense along creek beds and in other low-lying areas.

EL30/2002 is of primary interest to ZZ Exploration as it largely encloses current mining tenements held by Oceania Tasmania Pty Ltd (Oceania Tasmania) and covers the strike extent of the dominant mineralised structures within the tenements.



**Figure 1:** Location of EL 30/2002 relative to Zeehan.

ZZ Exploration has focused on finding minable extensions of the known Devonian granite-related deposits extending from the Comstock mining leases (the Balstrup Fault), as well as deposits of similar and/or litho-stratigraphic position.

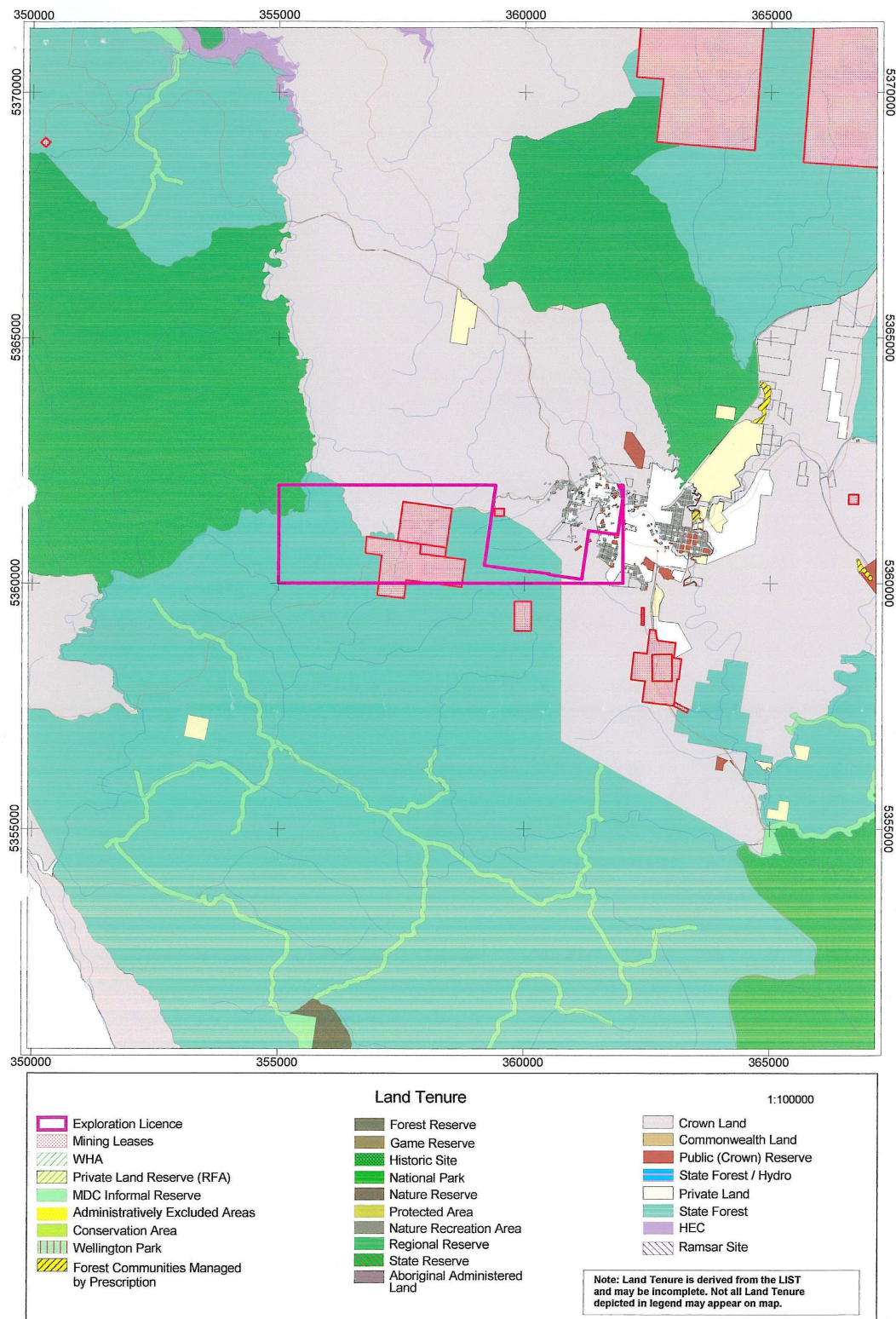
#### **1.4.2 Exploration Lease Tenure**

EL 30/2002 was granted to ZZ Exploration on the 7 February 2003 for a period of five years and applies to all Category 1 minerals. The licence covers 8 square kilometres and excluded areas include:

- Any land owned or leased by the Commonwealth of Australia;
- Mining Leases;
- Retention Licences; and
- Crown reservations.

The current land tenure in and around EL 30/2002 is provided in Figure 2.





**Figure 2: Land tenure for EL 30/2002.**

## 1.5 STRUCTURE OF THIS DOCUMENT

A brief description of the structure of this report is provided in Table 1.

**Table 1:** Brief description of the report structure

<b>Section Heading</b>	<b>Brief Description of the Information Provided</b>
Executive Summary	A summary of the exploration activities undertaken within Exploration Licence 30/2002.
1.0 Introduction	Brief description of the proponent, the exploration licence location and tenure.
2.0 Summary of Previous Work	Summary of geological exploration previously undertaken with the area covered by EL 30/2002.
3.0 Regional Exploration Undertaken during 2005-2006	Description of exploration activities by ZZ Exploration on a regional scale within EL 30/2002 during the reporting period.
4.0 Exploration at the Balstrup Fault 2005-2006	Details of exploration activities by ZZ Exploration at the Balstrup Fault.
5.0 Exploration Expenditure	Summary of exploration expenditure by ZZ Exploration over EL 30/2002 during the reporting period.
6.0 Proposed Work Program	Description of the proposed exploration program within EL 30/2002 during 2006.
7.0 Summary of Exploration Activities within EL 30/2002	Brief summary of all exploration activities undertaken within EL 30/2002 during the reporting period.

## 2 SUMMARY OF PREVIOUS WORK

---

### 2.1 PREVIOUS MINING AND EXPLORATION WITHIN EL 30/2002

#### 2.1.1 Regional Exploration Activities

EL30/2002 is considered to be geologically complex, dominated by deformed turbidites, carbonates and volcanics of the Neoproterozoic Oonah Formation (Tear 2005).

Sediments and volcanics of the Crimson Creek Formation and Dundas Group occupy the central and eastern portions; while gabbros, basalt flows and massive serpentinite of the McIvor Hill Complex (bounded by the Tenth Legion Fault) crop out in the SW portion of EL30/2002. Siluro-Devonian sediments of the Zeehan Sub-basin including the Crotty Quartzite, Amber Slate, Keel Quartzite, Austral Creek Siltstone, Florence Quartzite and Bell Shale are exposed in the eastern portion of EL30/2002. An ENE-trending Devonian granitoid spine associated with the Heemskirk Granite is shown to extend beneath EL30/2002 (Leaman & Richardson, 1989).

The Oonah Formation, south of the Balstrup Fault, comprises the main target sequence for zinc mineralisation. These units are thought to form a complexly folded, flat lying sequence in this area (Tear 2005). At greater depths, some carbonates in the Oonah Formation have been intruded by serpentinised ultramafic units, thereby producing mineralised skarn lithologies (Tear 2005).

A high resolution helimag survey conducted in 1998 identified and defined several anomalies within the area now covered by EL 30/2002. Allegiance Mining No Liabilities (Allegiance Mining) conducted research into the evaluation of these anomalies to determine their potential to host nickel sulphide deposits in the 'Avebury style', with one anomaly considered to potentially host a nickel deposit (Newnham 2000). There has been no further research into the anomalies identified since 2000.

#### 2.1.2 Previous Exploration over the Balstrup Fault Prospect

Exploration into the mineral deposit associated with the Balstrup Fault have been previously carried out by Renison Goldfields Consolidated Ltd (RGC) and Western Metal Resources Ltd (WMR), including resource estimation based on limited drilling operations (Cotlco 2005a).

Research conducted by Farrell (2001) investigated the structural relationships and development of the Comstock Zn-Pb-Ag deposit host rocks. This study also provides a summary of past exploration activities and results of exploration within the Comstock mine area.

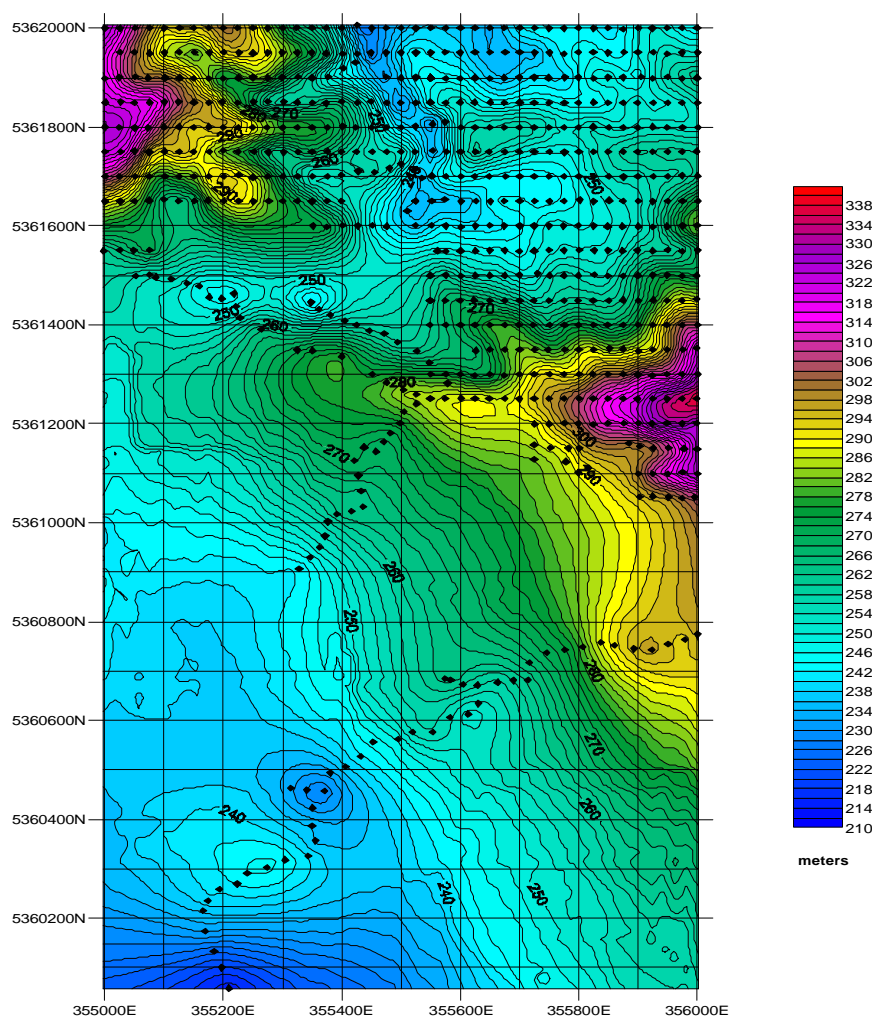


### 3 REGIONAL EXPLORATION UNDERTAKEN DURING 2005-2006

ZZ Exploration has undertaken regional and prospect based exploration activities within EL 30/2002, during January 2005 – June 2006. Prospect based exploration activities have focussed on the Balstrup Fault massive sulphide deposit, with details provided in Section 4.

As part of the regional exploration of EL 30/2002, ZZ Exploration undertook a detailed combined GPS and gravity survey during March – May 2006 across the Balstrup Fault and area within EL 30/2002 (Figure 3) (Plates 1 and 2).

Survey lines were surveyed at 25m intervals (east-west direction) and 50m intervals (north-south direction), where access was possible (Solo Geophysics 2006). Gravity survey lines were located at 25m station intervals along the survey lines (Solo Geophysics 2006). Further details of the gravity survey are provided in Appendix C.



**Figure 3:** EL 30/2002 (West Comstock) gravity survey results (at 2.67 gms/cc) (Solo Geophysics 2006).

**Plates 2 and 3: Gravity surveying within EL 30/2002**

Photos courtesy of Solo Geophysics (2006).

ZZ Exploration have also initiated a detailed regional study within EL 30/2002 (Appendix D), focussing on:

- Fine grained clastic hosted stratabound lead-zinc deposits in the Proterozoic Oonah Formation and the Devonian Bell Shale;
- Nickel mineralisation of the Avebury-type or the Melba Flats style; and
- The potential for iron/magnetite resources proximal to the Heemskirk Granite.

## 4 EXPLORATION AT THE BALSTRUP FAULT, 2005-2006

### 4.1 GEOLOGY

#### 4.1.1 Deposit Type

Based on research conducted by RGC, the Balstrup Fault is considered to be a complex composite fault structure, with a traceable WNW-strike for at least 3.5km, with a width of up to 40m (Crossing, 1991).

The Balstrup massive sulphide deposit, associated with the Balstrup Fault, is considered to be a combination of an early skarn and a later base metal replacement deposit (hosted by Upper Oonah carbonates and siliciclastics), with the deposit restricted to the immediate footwall of the Balstrup Fault (Crossing 1993).

The Balstrup massive sulphide body is composed of two distinct sulphide assemblages (Taylor 1993). Medium- to coarse-grained massive pyrrhotite-sphalerite-galena is the characteristic assemblage at the deeper levels of the deposit, while coarse-grained euhedral massive pyrite  $\pm$  sphalerite and galena is dominant in the upper levels (Taylor 1993, Crossing 1993).

Research by Radonich (2001) into the geochemical nature of the Balstrup Fault deposit has identified that the paragenetic sequence for the base metal sulphide assemblage hosted by the Balstrup Fault is complex, often obscured by post-formation plastic deformation, and possible remobilisation and recrystallisation of minerals. An investigation into the structural relationships and development of the Balstrup Fault deposit has been undertaken by Farrell (2001).

#### 4.1.2 Nickel Deposits

In 2006, ZZ Exploration collected 7 samples from within EL 30/2002 as part of investigations into previously identified prospective nickel deposit areas. Samples were collected at the following locations (AGD66 projection):

- 55 361148E, 5360175N (sample ZZRHF 01/06); and
- 55 361127E, 5360142N (samples ZZRHF 02-06/06).

Significant old workings were located in this area indicated that it has previously been the subject of mining and mineral exploration.

Table 2 presents a summary of the geochemical results from the analysis of the 7 samples, with the complete results provided in Appendix E.

This site has been identified by ZZ Exploration as a prospective site for future drilling operations within EL 30/2002.

**Table 2:** Summary of nickel assay results for samples collected from within EL 30/2002 (ZZ Exploration 2006).

Sample	Ni (ppm)
ZZRHF-01	221
ZZRHF-02	14
ZZRHF-03	106
ZZRHF-04	91
ZZRHF-05	55
ZZRHF-06	34
ZZRHF-07	75

## 4.2 MINERAL RESOURCE

### 4.2.1 Resource Estimation

Inferred resource estimations (not JORC compliant) were undertaken by RCG and WMR during exploration over the Balstrup Fault prospect.

During 2005, ZZ Exploration commissioned an independent 'competent' geologist (Cotlco Pty Ltd) to undertake a resource estimation of the Balstrup Fault prospect, following the Joint Ore Resources Committee (JORC) Code (Table 3) (Appendices F).

**Table 3:** JORC resource classification for the Balstrup Fault prospect (Cotlco 2005b).

Deposit	JORC Resource Category	Tonnes	Pb%	Zn%	Ag g/t
Balstrup Fault	Inferred	4,600,000	3.3	5.7	35

Cotlco (2005a) notes that the comparatively large separation of the drill hole intercepts limits the resource category to the JORC Inferred category. Further drilling programs with increased drilling density would increase confidence in lode structure and grade projections (Cotlco 2005a). An average spacing of 50m for drill holes is considered to be likely to be required to confirm spatial continuity before a higher JORC resource classification category could be supported.

### 4.2.2 Resource Valuation

ZZ Exploration commissioned Anderson and Schwab Pty Ltd (Anderson and Schwab) in 2005 to undertake a review of the mineral assets of Zeehan Zinc Ltd (Zeehan Zinc), which includes the Balstrup Fault prospect (Appendix G). In May 2006, Anderson and Schwab reviewed the resource valuations, following further exploration activities by Zeehan Zinc (and associated companies). The valuation of the mineral assets of Zeehan Zinc are provided in Table 4.

**Table 4:** Estimated resource valuations of the mineral assets of Zeehan Zinc Ltd (Anderson and Schwab 2006).

Asset	Valuation Method	Value		
		Low	Market	High
Comstock mine (Allison's Lode, <b>Balstrup Fault</b> , Main Lode including West Lode) and Oceana deposit	NPV of discounted future cash flows	\$93.5m	\$267 m	\$316.0m

### 4.2.3 Mining Lease Application

On 7 July, 2005, ZZ Exploration applied for a mining lease over the Balstrup Fault (5M/2005) (Appendix H).

MRT subsequently advised on the 2 August 2005 that it would recommend to the Minister for Infrastructure, Energy, and Resources that he refuse the application on the grounds that the lease application was an attempt to circumvent the intent of the Minister to revoke exploration licences 20/2002 and 30/2002 (Appendix H). MRT also questioned the ability of ZZ Exploration to satisfy Section 75 of the *Mineral Resources Development Act 1995*.

ZZ Exploration provided MRT on the 19 August 2005 with further information regarding ZZ Exploration's reasoning for applying for the mining lease 5M/2005, which was based on the results of a JORC compliant resource calculation.

ZZ Exploration was subsequently advised by MRT on 5 September 2005 that the recommendation from MRT for the Minister to refuse the grant of mining lease 5M/2005

would not be placed before the Minister until the revocation of EL 30/2002 has been resolved by the Mining Tribunal (Appendix H).

#### **4.2.4 Business Plan**

In 2003, Zeehan Zinc Ltd (the parent company of ZZ Exploration) developed a business plan. In October 2005, the business plan was subsequently reviewed to reflect current changes to metals prices and exchange rates (Appendix I). In consideration of the significant increases in metal prices since October 2005, the business plan was reviewed again in January 2006 (Appendix J).

## 5 EXPLORATION EXPENDITURE

### 5.1 EXPENDITURE DURING THIS REPORTING PERIOD

Table 5 summarises the expenditure by ZZ Exploration over EL 30/2002 during the reporting period.

**Table 5:** Summary of expenditure over EL 30/2002 during 2005 - 2006.

Expenditure Statement	2005				2006	2005 - 2006
Category	March Quarter	June Quarter	September Quarter	December Quarter	March Quarter	Category Total
Geology	\$ 8,400.00	\$15,430.73	\$17,678.00	\$10,657.81	\$ 37,483.39	89,649.93
Geochemistry	-	-	-	-	-	-
Geophysics – Air	-	-	-	-	-	-
Geophysics – Ground	-	-	-	-	\$ 21,270.55	21,270.55
Feasibility Studies	-	-	-	\$ 4,545.45	\$ 12,978.89	17,524.34
Rehabilitation	-	-	-	-	-	-
Drilling (m)	-	-	-	-	-	-
Gridding line km)	-	-	-	-	-	-
Administration	-	\$ 4,944.66	\$13,985.41	\$ 9,494.72	\$ 5,726.56	34,151.35
Other	\$46,300.56	\$26,735.00	\$11,992.50	\$20,532.97	\$118,302.53	223,863.56
<b>Grand Total</b>	<b>\$54,700.56</b>	<b>\$47,110.39</b>	<b>\$43,655.91</b>	<b>\$45,230.95</b>	<b>\$195,761.92</b>	<b>\$386,459.73</b>

### 5.2 EXPENDITURE COMMITMENTS

EL30/2002 was granted on 7 February 2003 with an attaching expenditure commitment of \$505,000 for the first two years. As the exploration licence was granted in the March quarter of 2003, expenditure is therefore reported from (and including) the March quarter of one year, through to the March quarter of the next year (e.g. March quarter 2003 – March quarter 2004) (Table 6).

**Table 6:** Expenditure commitments by ZZ Exploration over EL 30/2002.

Expenditure required (minimum)	EL30/2002 (71km <sup>2</sup> )
Years 1 & 2	\$505,000
Year 3	\$1000 per km <sup>2</sup> per annum
Year 4	\$2000 per km <sup>2</sup> per annum
Year 5	\$5000 per km <sup>2</sup> per annum
<b>Total minimum expenditure up to March quarter 2006 ( including years 1, 2 &amp; 3)</b>	<b>\$513,000</b>

Information supplied by ZZ Exploration indicates that the actual expenditure for each exploration licence, for the first three year term of EL 30/2002 was \$551,902 (Table 7). This expenditure is in excess of the required commitment for EL 30/2002.



**Table 7:** Expenditure over EL 30/2002 by ZZ Exploration during 2003 - 2006.

Expenditure Statement	2003	2004	2005	2006	2003-2006
Category	Total	Total	Total	First Quarter	Category Total
Geology	\$42,466.43	\$51,406.96	\$52,166.54	\$37,483.39	\$183,523.32
Geochemistry	-	-	-	-	-
Geophysics – Air	\$2,200.00	-	-	-	\$2,200.00
Geophysics – Ground	-	-	-	\$21,270.55	\$21,270.55
Feasibility Studies	\$1,551.00	\$3,549.05	\$4,545.45	\$12,978.89	\$22,624.39
Rehabilitation	-	-	-	-	-
Drilling (m)	-	-	-	-	-
Gridding line (km)	-	-	-	-	-
Administration	\$5,398.01	\$3,695.68	\$28,424.79	\$5,726.56	\$43,245.04
Other	\$7,762.65	\$48,002.00	\$105,561.03	\$118,302.53	\$279,628.43
<b>Grand Total</b>	<b>59,378.45</b>	<b>106,064.25</b>	<b>190,697.81</b>	<b>\$195,761.92</b>	<b>\$551,902.43</b>

ZZ Exploration was advised by the Minister for Infrastructure, Energy and Resources (DIER), in a letter dated 7 July 2005, that his decision to revoke EL 30/2002 under Section 34(1) of the Mineral Resources Development Act 1995, would stand. The Minister had convened a meeting with the ZZ Exploration on 8 June 2005 regarding the issue of proceeding to revoke EL 30/2002.

ZZ Exploration advised the Minister, in a letter dated 4 August 2005, that it would appeal against the decision to revoke EL 30/2002. Subsequently, the first hearing of the Mining Tribunal was held in Launceston on the 26 September 2005 and the discovery process initiated. A second hearing for 28 October 2005 was adjourned and the next hearing is set for 28 November 2006.

---

## **6 PROPOSED WORK PROGRAM**

---

Exploration during 2006 over EL 30/2002 by ZZ Exploration will consist of the following elements:

- A detailed regional study within EL 30/2002, focussing on:
  - Fine grained clastic hosted stratabound lead-zinc deposits in the Proterozoic Oonah Formation and the Devonian Bell Shale;
  - Nickel mineralisation of the Avebury-type or the Melba Flats style; and
  - The potential for iron/magnetite resources proximal to the Heemskirk Granite.
- Ground-based gravity survey over EL 30/2002 and part of the Balstrup Fault;
- RC drilling program over the Balstrup Fault;
- Evaluation of the nickel and zinc potential for the far south-west corner of EL 30/2002, based on previous helimag survey results;
- Collection and geochemical analysis of samples for nickel; and
- Development of a detailed geological database that includes the drilling results of previous exploration within EL 30/2002.

Two of the elements that fall under the 2006 work program have been completed or are in progress. These include:

- Ground-based gravity survey over EL 30/2002 (completed); and
- Collection and geochemical analysis of sample for nickel (initial sampling completed, further sampling planned for 2006).



## 7 SUMMARY OF EXPLORATION ACTIVITIES WITHIN EL 30/2002

A summary of the exploration activities undertaken by ZZ Exploration during the reporting period is as follows:

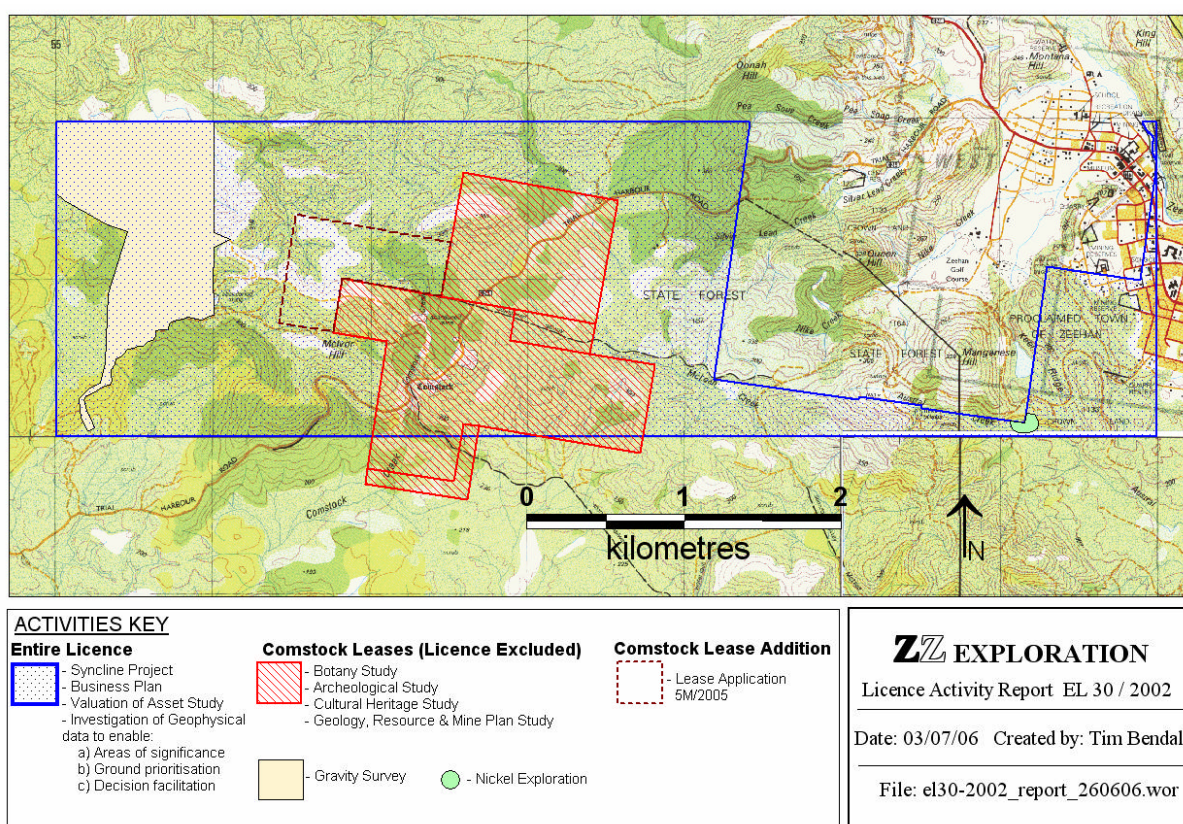
### *Regional Exploration*

- Gravity Survey – approximately 19 km of on ground gravity @ 25m spacing has been undertaken by Solo Geophysics Pty Ltd under the supervision of David Leaman; and
- Initiation of a study into the possibility of other outcrops (e.g. Gordon Limestone, Oonah Formation, Bell Shale) hosting small scale lead-zinc deposits, nickel mineralization (e.g. Avebury of Melba Flats style deposits), and the potential for iron-magnetite resources proximal to the Heemskirk Granite.

### *Balstrup Fault Prospect*

- Collection of 7 samples for nickel analysis;
- Completion of a JORC compliant resource estimation and classification for the Balstrup Fault and its extension into EL 30/2002;
- Application for a mining lease (5M/2005) over the extension of the Balstrup Fault;
- Completion of a valuation of the mineral and production assets of Zeehan Zinc, which includes the Balstrup Fault; and
- Revision of the Zeehan Zinc Business Plan to reflect current changes to metals prices and exchange rates.

An exploration activity map illustrating the areas that have been the focus of exploration during the reporting period and the nature of the exploration is provided in Figure 4.



**Figure 4:** Exploration activity map for EL 30/2002 during 2005.

## 8 REFERENCES

- Anderson & Schwab Australian Ltd (2006). *Valuations of the Mineral Assets of Zeehan Zinc Limited*. May 2006.
- BDR Consulting Pty Ltd (2005). *Zeehan Zinc Limited Business Plan – Update of Financial Aspects, October 2005*. October 2005.
- BDR Consulting Pty Ltd (2006). *Zeehan Zinc Limited Business Plan – Update of Financial Aspects, January 2006*. January 2006.
- Cotlco Pty Ltd (2005a). *Mining Licenses 43M/85, 19M/1995, 12M/47, & 9M/2002, Exploration Licenses 20/2002 and 30/2002 Western Tasmania – Resources Estimation and Classification Update*. February 2005.
- Cotlco Pty Ltd (2005b). *Mining Licenses 43M/85, 19M/1995, 12M/47, & 9M/2002, Exploration Licenses 20/2002 and 30/2002 Western Tasmania – Resources Estimation and Classification Update*. September 2005.
- Crossing, D.J. F (1991). *E.L. 42/87, Incorporating M.L.'s 43M/1985 and 123M/47, Zeehan Area, Annual Report for the Period October 1990 to September 1991*. RGC Exploration Pty Ltd, Report T/91/23.
- Crossing, D.J. F (1993). *E.L. 42/87, Incorporating M.L.'s 43M/1985 and 123M/47, Zeehan Area, Annual Report for the Period October 1992 to September 1993*. RGC Exploration Pty Ltd, Report T/91/23.
- Farrell, J.N (2001). *The Structure of the Comstock Zn-Pb-Ag Deposit, Western Tasmania*. Unpublished Honours Thesis, University of Tasmania.
- Leaman, D.E and R.G. Richardson (1989). *The Granites of West and North-West Tasmania – A Geophysical Interpretation*. Bulletin of the Geological Tasmanian Survey, **66**.
- Mineral Resources Tasmania (1999). *Mineral Exploration Code of Practice- 4<sup>th</sup> edition*. March 1999.
- Newnham, L.A (2000). *EL 2/96 – Tenth Legion Area, Report for the Twelve Month Period Ending February 2000*. Newnham Exploration and Mining Services Pty Ltd, March 2000.
- Radonich, A.D. (2001). *The Geology, Geochemistry, and Genesis of the Comstock Zn-Pb-Ag Deposit, Western Tasmania*. Unpublished Honours Thesis, University of Tasmania.
- SMG Consultants Pty Ltd (2006g). *Comments on Resource to Reserve Conversion Factors, West Tasmania*. May 2006.
- Solo Geophysics & Co. (2006). *Gravity Surveys for the Zeehan Area, Tasmania, March – May 2006*. May 2006.
- Taylor, M.I (1993). *Skarn and Sulfide Mineralisation of the Sylvester Prospect, Zeehan, Western Tasmania*. Unpublished Honours Thesis, University of Tasmania
- Tear, S (2005). *Geological Update on the Comstock Prospect, Zeehan, West Tasmania*. Benmore Exploration Pty Ltd, 2005.

---

## **9 APPENDICES**

---

Appendix A: *Schedule from Exploration Licence EL 30/2002*

Appendix B: *Location of Mineral Deposits within EL 30/2002*  
MIRLOCH Mineral Locations

Appendix C: *Gravity Surveys for the Zeehan Area, Tasmania*  
Solo Geophysics & Co, 2006

Appendix D: *Proposed Geological Investigations over EL 30/2002*  
Hellman & Schofield Pty Ltd, 2006

Appendix E: *Resources Estimation and Classification Update*  
Cotlco Pty Ltd, 2005

Appendix F: *Results of Nickel Assays from within EL 30/2002*  
ZZ Exploration Pty Ltd, 2006

Appendix G: *Valuation of the Mineral Assets of Zeehan Zinc Limited*  
Anderson & Schwab Australia Ltd, 2006

Appendix H: *Application for a Mining Lease over the Balstrup Fault*  
ZZ Exploration Pty Ltd, 2005

Appendix I: *Business Plan – Update of Financial Aspects, October 2005*  
BDR Consulting Pty Ltd, 2005

Appendix J: *Business Plan – Update of Financial Aspects, January 2006*  
BDR Consulting Pty Ltd, 2006